

Dry Block Calibrators

Wide Temperature Range

CALsys 1200 offer a wide temperature range from 250 °C to 1200 °C

Lightweight, portable

The CALsys 1200 block is ideal for Industrial/ Laboratory field use. It only weighs about 8 kg, and it is small enough to carry around.

Speed

The CALsys 1200 extremely quick to reach various temperatures, i.e. it cools down to 250°C in 150 minutes and heats up room temp to +1200 °C in 60 minutes.

Accuracy and performance

The CALsys 1200 is an easily portable unit that also provides excellent calibration accuracy with stability $\pm 0.3^{\circ}\text{C}$ at 1200 °C.

Accredited calibration

Each CALsys 1200 is delivered with an accredited calibration certificate.

Computer Interface

The communication port(RS-232/ USB) enables communication with selected CALsys 1200 calibrators for automation calibration and documentation thus it made documentation easy.

Calsys 1200

Portable, Lightweight, highly accurate temperature Calibrator for Industrial/ Laboratory field use



CALsys 1200 offers easy to use portable temperature calibrator with high temperature range from 250 to 1200°C. It is a highly stable standard furnace for calibrating thermocouples / RTD. This calibrator can be used on site for high temperature calibration and also find application in glass, electric power, automotive and material process industry. The comparison volume is a metallic block of special material, which has a diameter of 37mm and 215mm long. The temperature of the calibrator is set and controlled by a self tuned PID controller with automatic super fine adjustment. Our newly designed CALsys 1200 model offers better esthetic design and performance wise upgraded to next level.

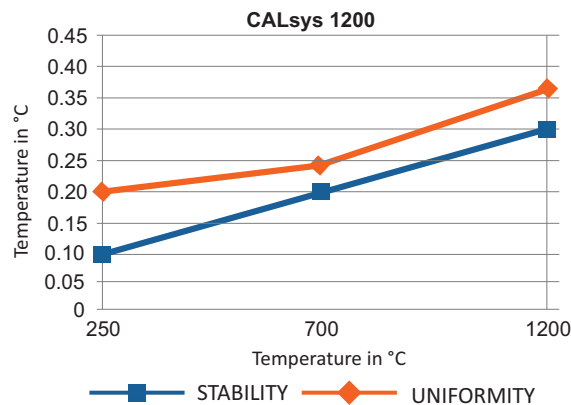
With the Tempsens make Compact Temperature Calibrator, you have chosen an extremely effective instrument which we hope will live up to all your expectations. This is a fast, timesaving, and reliable true industrial temperature calibrator designed for on-site use.

During the past several years, we have acquired extensive knowledge of industrial temperature calibration. This expertise is reflected in our products which are all designed for daily use in an industrial environment.

SPECIFICATIONS

| | |
|--------------------------------------------------------------------------|------------------------------------------------|
| Temperature range | 250 °C to 1200 °C |
| Accuracy | ±2 °C |
| Stability | ±0.01°C at 250°C |
| | ±0.02°C at 700°C |
| | ±0.03°C at 1200°C |
| Radial uniformity | ±0.20°C at 250°C |
| | ±0.24°C at 700°C |
| | ±0.36°C at 1200°C |
| Loading effect (with a 6.35 mm reference probe and three 6.35 mm probes) | 0.04°C |
| Hysteresis | 0.02 °C |
| Immersion depth | 160 mm |
| Insert OD dimensions | 37 mm |
| Method of Control | Self tuned PID controller |
| Heating time | 60 Min |
| Cooling time | 150 Min (1200 °C to 250 °C) |
| Resolution | 0.1 °C up to 999°C |
| Display | LCD, °C or °F user-selectable |
| Size (H x W x D) | 405(H) x 205(W) x 285(D) mm |
| Weight | 13Kg |
| Power requirements | 230 VAC, 1.5 KW(50 Hz) |
| Computer interface | RS - 232 |
| Calibration | Accredited calibration certificate provided |
| Environmental operating conditions | 0 °C to 40 °C, 0 % to 90 % RH (non-condensing) |
| Specifications valid in environmental conditions | 13 °C ... 33 °C |

Graphical Representation

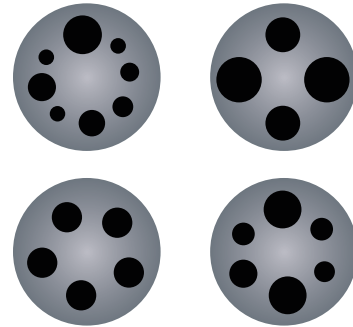


ACCESSORIES

Inserts for CALsys 1200 models

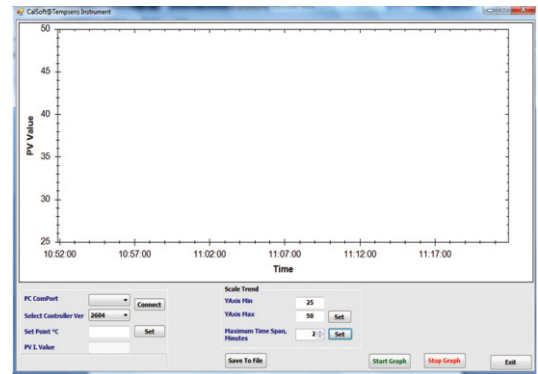
Inserts for CALsys 1200 are made of special material. All specifications on hole size based on outer diameter of the sensor under test. We also offer customized hole size based on Customer requirements.

| Inserts | Description |
|---------|----------------------------------------|
| Ci1 | Multihole, 4 x 6.5 mm |
| Ci2 | Multihole, 4 mm,6 mm,8 mm,10 mm |
| Ci3 | Multihole, 2x3 mm, 2x4 mm,6 mm |
| Ci4 | Multihole, 8 mm, 10 mm, 2x3 mm, 1x4 mm |
| Ci5 | Multihole, 8 x 3 mm |
| CI6 | Special (Customized) |



Customized Equalizing Block....Part No. EQ1

SOFTWARE



- CalSoft including for setting bath temperature and monitoring the PV. Graphical representations of PV/TIME with 2 hours data logging.

MASTER SENSOR

- Reference Standard Thermocouple ('N' Type T/C).....
Part No. TTCN-300



- NABL accredited calibration certificate - 3 point
- Operational Manual

CARRY CASE



- Tempens makes customized carry case is a rugged, safe perfectly designed to carry our new CALsys 1200 calibrator and different accessories.