

High Temperature Dry Block Furnace

Wide Temperature Range

CALsys 1500L offer a wide temperature range from 500 °C to 1500 °C

Simple to use

The CALsys 1500L block is ideal for Industrial/ Laboratory field use. It is simple enough to testing and calibration uses.

Speed

The Calsys 1500L extremely quick to reach various temperatures heats up room temp to +1500 °C in 30 mins . This saves time and increases productivity.

Accuracy and performance

The Calsys 1500L is an easy to use that also provides excellent calibration accuracy with stability $\pm 1.0^{\circ}\text{C}$ at 1500°C.

Accredited calibration

Each Calsys 1500L is delivered with an accredited calibration certificate.

Computer Interface

The communication port(RS-232) enables communication with selected Calsys 1500L calibrators for automation calibration and documentation thus it made documentation easy.

Calsys 1500L

Highly accurate temperature Calibrator for Industrial / Laboratory field use



Calsys 1500L offers easy to use temperature calibrator with high temperature range from 500 to 1500°C. It is a highly stable standard furnace for calibrating thermocouples / RTD. This calibrator can be used on site for high temperature calibration and also find application in glass, electric power, automotive and material process industry. The comparison volume is a metallic block of special material, which has a diameter of 37mm and 245mm long. The temperature of the calibrator is set and controlled by a self tuned PID controller with automatic super fine adjustment. Our newly designed CALsys 1500L model offers better esthetic design and performance wise upgraded to next level.

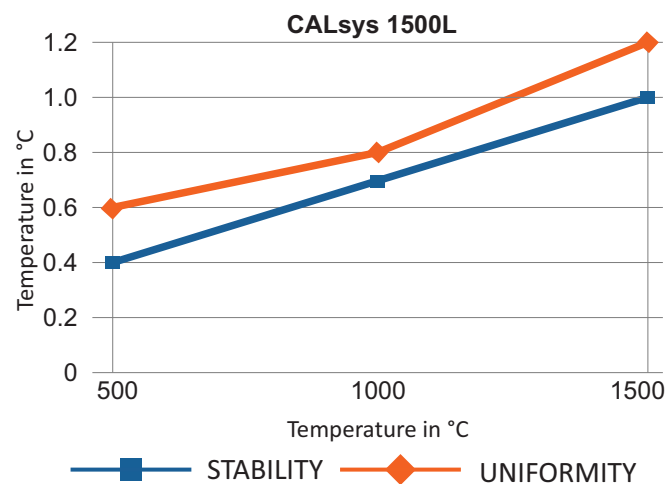
With the Tempsens make Temperature Calibrator, you have chosen an extremely effective instrument which we hope will live up to all your expectations. This is a fast, timesaving, and reliable true industrial temperature calibrator designed for on-site use.

During the past several years, we have acquired extensive knowledge of industrial temperature calibration. This expertise is reflected in our products which are all designed for daily use in an industrial environment.

SPECIFICATIONS

Temperature range	500 °C to 1500 °C
Accuracy	±3 °C
Stability	±0.4°C at 500°C
	±0.6°C at 1000°C
	±1°C at 1500°C
Uniformity	±0.6°C at 500°C
	±0.8°C at 1000°C
	±1.2°C at 1500°C
Controlling sensors	R type duplex
Stabilization time	15 to 20 mins
Immersion depth	140 mm
Insert dimensions	37 mm
Method of Control	Self tuned PID controller
Heating time	30 mins
Resolution	1 °C
Display	LCD, °C or °F user-selectable
Size (H x W x D)	590(H) x 450(W) x 530(D) mm
Weight	55Kg
Power requirements	230 VAC, 3.0 KW(50 Hz)
Computer interface	RS - 232
Calibration	Accredited calibration certificate provided
Environmental operating conditions	0 °C to 40 °C, 0 % to 90 % RH (non-condensing)
Specifications valid in environmental conditions	13 °C ... 33 °C

Graphical Representation

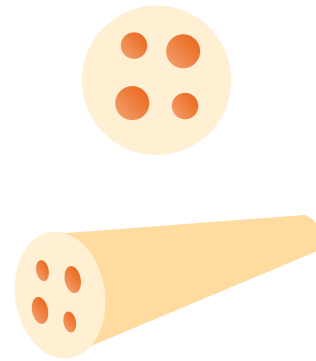


Insert construction

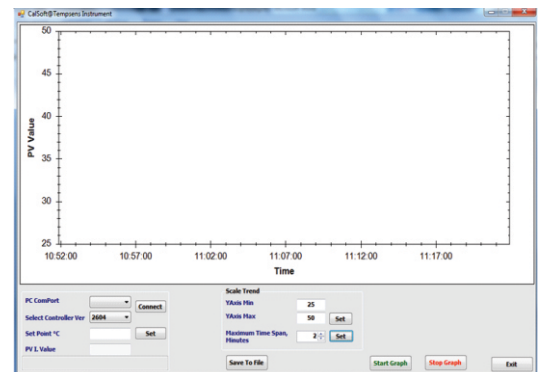
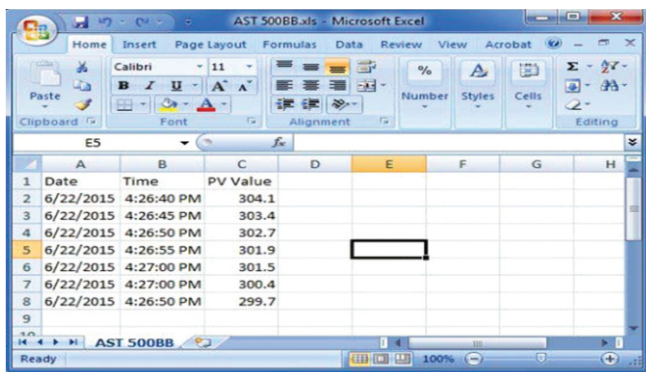
Inserts for CALsys 1500L models

Inserts for CALsys 1500L are made of ceramic block. All specifications on hole size based on outer diameter of the sensor under test. We also offer customized hole size based on Customer requirements

Inserts	Description
Ci1	Multihole, 2 x 6.5 mm, 2x8.5 mm
Ci2	Special (Customized)



SOFTWARE



- CalSoft including for setting bath temperature and monitoring the PV. Graphical representations of PV/TIME with 2 hours data logging.

MASTER SENSOR

- Reference Standard Thermocouple (PT-RH-RH/PT R Type T/C)..... Part No. TTCR-300



- NABL accredited calibration certificate - 3 point
- Operational Manual